

FAME HORIZONTAL



FAME HORIZONTAL

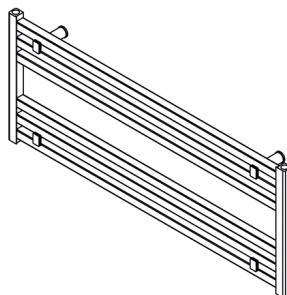
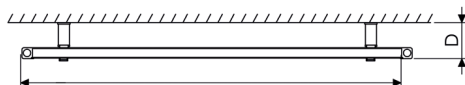
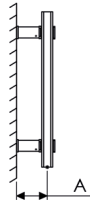
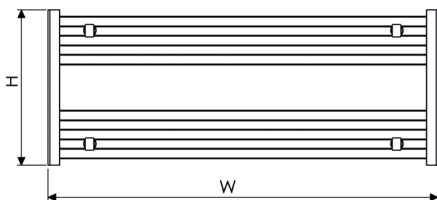
Material	Stock Finishes	Guarantee	Installation
Aluminium	PLS SEE COLOUR KEY CHART - Click for Link	5 Years	Horizontal

PRODUCT CODE	Height (mm)	Width (mm)	Sections	Pipe Centers (mm)	Wall to pipe Centers	Wall Distance	Nett Weight	Water Content	Fuel Type	Heat Outputs	
	H	W	n	C1	A (mm)	D (mm)	(kg)	(lt)		Watts	BTU
FME 100040006	400	1000	6	975	79-99	93-113	5.1	1.5	C	460	1571

Please add finishing code at the end of the product code

Code example : FME 100040006 PLS

Fuel type i.e.,
C: Central heating
E: Electrical heating
D: Dual heating (C+E)



A full range of made to order sizes available.

Please ask for details.

n = number of sections

Max. working pressure

10 bar

Max. working temperature

95 °C

Connections

½"

Section width

27 mm

Section depth

28 mm

Pipe center

C1 W - 25 mm